

BOLT ON ELEMENTS

Hairpin Form
(HP)



Sickle Form
(US) (FS) (SI)



Foldback Form
(FB)



Bent Series
(BS)



- Supersede Most 64mm Bolt-Ons (Made Since 1972)
- Supersede Many 2 1/2" Bolt-Ons (Made Before 1972)
- Have A Resistor For Glass Lined Tanks

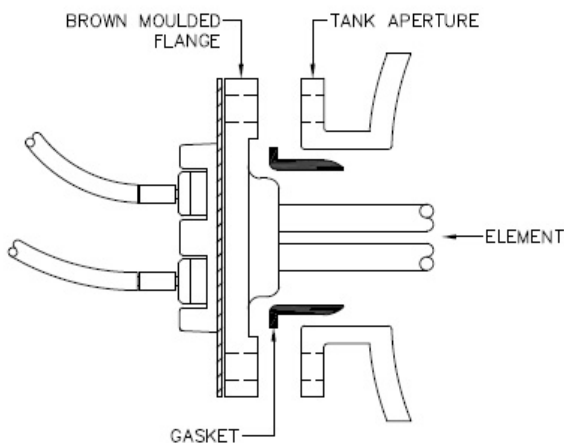


QD05Q0
Gasket for 64mm Bolt-On



VT7500
Set 4 Bolts
5/16 & 3/4 Hex

'BOLT ON' INSTALLATION RECOMMENDATIONS



- The extended L section neoprene gasket supplied is for use in H.W.S. tanks with standard 64 mm apertures. As shown in **Figure 1**.
- To assist in prolonging element life, drain and flush H.W.S. tank to remove sludge and buildup.
- To assist in prolonging H.W.S. tanks regularly check the anode (if your system has one), replacing it when it shows signs of significant degradation.

- **When replacing element retaining bolts initially finger tighten, then using a torque wrench tighten bolts in sequence of 2, 8, 4, 10 o'clock positions, (tighten to a maximum of 15 Nm)**
- **The brown moulded flange has moulded stops to prevent over compression of the gasket. The bolts should be tightened such that the stops butt against the tank aperture. Over tightening of the bolts may result in the stripping of the bolt or tank aperture threads.**
- **Incorrectly installed elements may cause leaking to occur and may void the element warranty.**

**COPPER ELEMENTS****120kW/m² SHEATH LOADING**

PART No.	WATTS	PENETRATION
WC18US7	1800	200 mm
WC24US7	2400	245 mm
WC30US7	3000	355 mm
WC36FS7	3600	290 mm
WC48FS7	4800	340 mm

COPPER ELEMENTS**150kW/m² SHEATH LOADING**

PART No.	WATTS	PENETRATION
WC60FS9	6000	341 mm

ALLOY 800 ELEMENTS**120kW/m² SHEATH LOADING****OUTSTANDING CORROSION RESISTANCE**

PART No.	WATTS	PENETRATION
WN12FB7A	1200	155 mm
WN18HP7A	1800	370 mm
WN24US7	2400	355 mm
WN30FS7	3000	305 mm
WN36FS7	3600	320 mm
WN48FS7	4800	340 mm
SS18BS	1800	210 mm
SS24BS	2400	270 mm
SS30BS	3000	305 mm
SS36BS	3600	370 mm
SS48BS	4800	460 mm
SS60BS	6000	540 mm

PART No.	WATTS	PENETRATION
SS09 HP	900	200 mm
SS12 HP	1200	mm
SS15 HP	1500	mm

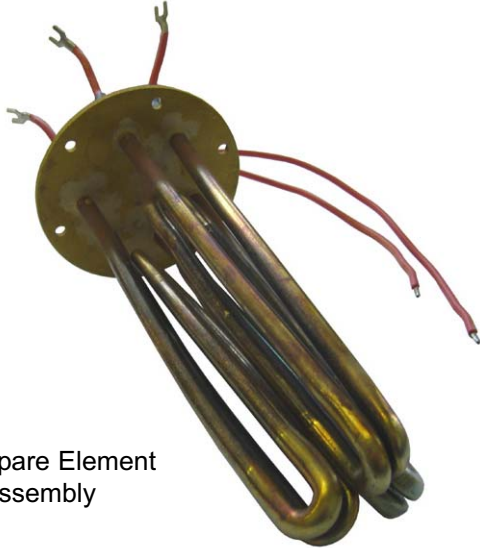
PART No.	WATTS	PENETRATION
SS15 FB	1500	mm
SS18 FB	1800	mm
SS36 FB-9	3600	mm

PART No.	WATTS	PENETRATION
SS15BSI	1500	mm
SS18BSI	1800	305 mm
SS24BSI	2400	305 mm
SS30BSI	3000	305 mm
SS36BSI	3600	305 mm
SS48BSI	4800	305 mm
SS60BSI-9	6000	375 mm

ALLOY 825 ELEMENTS
90kW/m² SHEATH LOADING
**OUTSTANDING CORROSION PERFORMANCE PLUS IMPROVED RESISTANCE TO PITTING
FOR HARSH ENVIRONMENTS**

PART No.	WATTS	PENETRATION
SW18BS	1800	240 mm
SW24BS	2400	290 mm
SW30BS	3000	370 mm
SW36BS	3600	460 mm
SW48BS	4800	610 mm

CONTINUOUS HOT WATER HEATER - SPARE ELEMENT



Spare Element
Assembly

Part No 3032A4/5
14.4 kW

Spare Element Assembly complete.
To suit Wilson Continuous Hot Water Heater
Model A5.



Suits Wilson Water Heater
Model A5